

Appleton Primary School Foundation Stage



Appleton Primary School Foundation Stage

Staff

Hours

Accommodation

Useful Information

Curriculum

Support at home

Top Tips

Links with other agencies

Contacts

Foundation Stage Staff

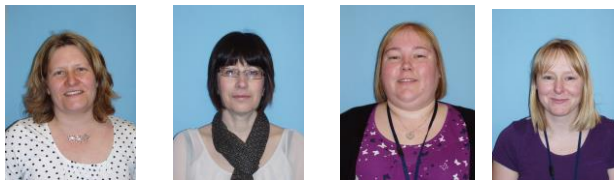
Head teacher – Mrs M Langton

Mrs J. Baglin (Foundation Stage Coordinator and Teacher)

Mrs J. Caulton (Teacher)

Mrs H. Drummond (Teacher)

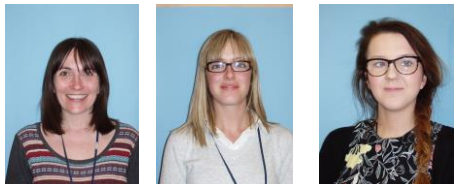
Miss C. Grindell (Teacher)



Miss A. Newton (Teaching Assistant level 3)

Mrs S. Matchett (Teaching Assistant level 3)

Miss E. Leach (Teaching Assistant level 3)



Foundation Hours

Foundation 1 (F1 or Nursery)

We open the doors to nursery children at 8.45 in the morning in the Foundation Stage Unit.

The morning session finishes at 11.45 although we open the doors to allow parents to collect children at 11.30.

The lunch hour for nursery children is from 11.45 – 12.45.

We open the doors to nursery at 12.45 in the afternoon.

The afternoon session finishes at 3.45 although we open the doors to allow parents to collect children at 3.30.

All children are entitled to 5 of the 3 hour sessions for free starting from the term after they turn 3. They may take these in the mornings, afternoons, beginning of the week or end of the week, although it is the same each week.

You may 'top up' the sessions by paying for extra sessions if they are available. These are £10.

Lunch time cover costs £2.50 and the children need to bring a packed lunch.

This money needs to be paid before the extra sessions are taken and before they stay for lunch.

Some children may be entitled to 30 free hours, depending on if they meet the criteria set by the government. This is if both parents (or one of a single parent family) work 16 hours or more at the basic living wage and earn under £100,000 a year.



Foundation 2 (F2 or Reception)

The school day starts at 8.55.

The lunch time is 11.55 – 1.15.

If the children are going home, they will be released from the Foundation Unit at 11.55. They should be brought back into school via the front entrance before 1.15.

The end of the school day is at 3.30.

The children will be released to a named adult by a member of staff.



Accommodation

We have a Foundation Stage Unit for F1 and F2 children.

We have an outside area with hard standing and grass which the children have access to every day. There is a playhouse, a sand pit and a climbing wall and slide.

We also have access to a wildlife area.

Inside the building, there are cloakrooms, 2 areas with toilets and hand washing basins as well as a disabled toilet, a staff kitchen, two areas for wet and messy activities and plenty of cosy areas for reading, building and mark making.

The building has sliding doors that can be closed to create 4 separate rooms.



Useful Information

Uniform – The children in Foundation 1 do not need to wear a uniform, however we do sell sweatshirts with the Appleton logo. We recommend that the children wear older clothes as we do lots of messy play. It is also a good idea to dress the children in clothes that means that they can go to the toilet independently, joggers and easy fasten bottoms are most suitable. Velcro shoes are also the best option.

All of the children's coats and shoes need to be named as they change regularly.

We do have outdoor waterproof trousers and jackets and wellies that the children wear outside, but a washable coat is appropriate in our unpredictable climate!

Foundation 2 children should wear the school uniform.

Boys – white or blue polo shirt, grey or black trousers or shorts, blue or school sweatshirt.

Girls – blue or white polo shirt, grey, blue or black skirt, pinafore, shorts or trousers, blue sweatshirt or cardigan. The children can also wear blue checked school dresses in the summer.

All of the uniform including shoes and coat need to be clearly named.

Inside shoes are also to be worn in the classroom. School plimsolls are the best option for this and should have the child's name inside.

Jewellery

The children should not wear any jewellery for nursery or school. If the children do have their ears pierced, they should just wear studs. These need to be removed or covered for PE.

Lunches

The children in F1 need a packed lunch if they are staying for the whole day.

Children in F2 are able to have packed or school lunch or be collected to go home for their lunch. The school dinner is currently free to Reception children and there is a menu available to make a daily. If you think that you may be entitled to a free school meal, please do see the office for a form.

According to the Department of Health, a healthy packed lunch should include:

Some starchy food—bread, pitta bread, tortilla, crackers, rice cakes, potatoes, pasta, breadsticks etc.

A good helping of fruit and vegetables— fresh, canned or tinned fruit, fruit smoothie, raw vegetables or cold roast vegetables, salads.

Some lean protein—healthier options include tuna or salmon tinned in water, boiled eggs, beans or lean meat like chicken or turkey, hummus, lentils.

Some low fat dairy food— low fat yoghurt, fromage frais, reduced fat cheese, pots of custard or rice pudding.

A drink—water, pure unsweetened fruit juice or low fat milk.

Parents may occasionally like to include a healthy snack like fruit muffin, plain or semi sweet biscuit, fruit scones or a small portion of fruit based cakes.

Milk and Fruit

The children in nursery and reception all have access to fresh water during the day and have a snack table in the class where they will have either milk or water and a piece of fruit.



Foundation Contribution

The Foundation Stage collects 'Foundation money', which helps us to purchase all of the consumables that we use each term. We ask for a voluntary contribution of £1 per week, which goes towards baking ingredients, play dough, craft materials and items that relate to the topic. This money really helps and we greatly appreciate those parents who make regular contributions.

Dietary requirements

Please inform a member of staff if your child has any food allergies or specific diets so that we can be aware of these during any food tasting.

Medical

Please also keep staff informed of any medical issues. If a child suffers from asthma, we are required to keep a named inhaler in school and will administer as necessary. Please see a member of staff and ensure that we have a written record of any issues. The school office is permitted to administer prescribed medicine if a form is completed.

Collecting and dropping off

The children in F1 (Nursery) are dropped off in the Foundation Unit at the beginning of their session when staff open the door. At their home time, when the doors are opened again, a member of staff will bring your child to you on seeing you enter the building. Please note that once a member of staff has handed over a child, they are the responsibility of the parent.

The children in F2 (Reception) may also come into the classroom at 8.45 when we open the gate and door. If the children in F1 or F2 are late, they should be taken to the school office to ensure they are recorded on the register. At the end of the school day, the children will be ready for home and a member of staff will release individuals when they see a named adult.

Please note that the children will only be released to a named adult who is 15 or over. If there is somebody else collecting the child, please call to inform a member of staff.

Please do not drive up the drive to drop off or collect children. Please park considerately on Appleton Road if you are using the car.

Curriculum

We follow the Statutory Framework from the Department for Education with the Early Years Foundation Stage framework. This has four principles that we follow:

A Unique Child

Positive Relationships

Enabling Environments

Learning and Development

To enable children to develop

- Personal, Social and Emotional Development,
- Communication and Language,
- Physical Development,
- Literacy,
- Mathematics,
- Understanding of the World
- Expressive Arts and Design

We aim to include the following areas within the Nursery and Reception classrooms.

- a writing area containing various writing implements and papers as well as envelopes and examples of good writing
- a book corner containing a range of fiction, non-fiction, poetry and class-made books
- a maths resource area which allows children to select appropriate items to help them solve practical problems
- a creative area containing resources for a range of art, design, music and technology activities
- a construction area containing resources for developing fine motor skills, social interaction and problem solving
- a small world area which allows children to extend fine motor skills, engage in imaginative play and develop language
- an area for sand, malleable materials (e.g. play dough) and water play, where children can engage in practical investigations
- a role play area which can be developed along themed line to cover several aspects of learning in “real life” scenarios.



The outside area is seen as an extension of the classroom and the above opportunities will be available outside as well as inside.



Through all of our strands we aim to develop the children as they Play and Explore, be an Active Learner and to have Creative and Critical Thinking.

We promote positive values to enable the children to contribute to British life in everything that we do, welcoming discussion and differences of opinion and encompassing all of the children's ideas.

Support at home

As we try to encourage independence in nursery and school, we would really appreciate it if the children are able to take off and put on their own footwear and coats. Although we will always help, the children are always immensely proud and able to move from the outdoor to indoor much quicker if they are able to do this independently.

Counting and looking at numbers, reading and sharing books with your child are all areas where the more practice really makes a difference.

Talking to your child about the things they are doing and encouraging tidying up at home all help in the skills needed at nursery and reception. We have a lending library in the nursery, where you and your child can come and choose a book together to share at home.

As the children get older, they are given word books to practice letter sounds and then simple words at home. These should be practiced and returned as often as possible.

In Reception, the children are given reading books to share and read at home. These should be read as often as possible as they can be changed each day. We see that the children who have the support at home make the most progress, so it really makes a difference. We expect parents to listen to the children read at least 3 times a week.

Reception children also have word books to practice their letter sounds and then simple words at home.

We have a two-way assessment using an app called tapestry, where parents and staff can post photographs and videos which feeds into the children's assessment. This forms part of the homework for Foundation children and is a good way to see what the children are interested in, and can do well. Photographs posted on tapestry must not be shared on any other social media.

We also post regular items of interest on twitter where you can follow us at @appletonprimary and on the school website, which also has important dates and information, www.appletonprimary.org.uk



Top Tips for parents to support their child to be ready for school

- Ask your child to tell you what they need, make eye contact with them and listen.
- Encourage your child to take themselves to the toilet, use toilet roll, flush the toilet and always wash their hands.
- Show your child how to hold a knife and fork, using it to eat, helping to cut up if tricky food.
- Sometimes, when reading or playing with your child, avoid distractions by turning the TV off, this will help them to concentrate.
- Support your child to hold the pencil correctly and how to write the letters in their name.
- Play finding games with their name.
- Allow your child to put on their own shoes and coat and to take them off and put them away.
- Prompt your child to say please and thank you – it is important to have good manners.
- Explain why you are saying Stop and No and that sometimes it is to keep them safe.
- Help them to share and encourage them to think of other people's feelings.

Is your child ready for school?

There has been much debate about what children should be able to do before they start Reception.

These are the 10 points that the Local Authority have suggested.

Can they?

1. Form simple sentences to tell somebody what they need
2. Take themselves to the toilet when they need to and be clean
3. Can they eat with a knife and fork
4. Pay attention, listen and take part in short activities
5. Hold a pencil correctly and make marks to show something
6. Recognise their own name
7. Put on and take off their own coat and shoes
8. Use the words Please and Thank you by themselves
9. Understand and respond to the words No and Stop
10. Consider the needs and think about other children



Links with Other Agencies

We have strong links with outside agencies, who we work with to support children and their families. We work with Fenchurch and Cottingham Children's Centre, Speech and Language Unit, Health Visiting Team, Children's Library, School Nursing Team, KIDs, Education Psychology Team and any other agency who we feel would make a positive contribution including the community Support Officers and the local community.

Appleton Nursery feeds into Appleton Primary School, but children also come to us for the first year of their Foundation Stage education in nursery, then move onto different schools as well as attending various private nurseries before joining us in reception. We have good links with local PVI's and meet to discuss children who are moving between settings.



Contacts

School – 01482 343507

Website – www.appletonprimary.org.uk

Email – admin@appleton.hull.sch.uk

Twitter - @appletonprimary

School Nurse Team - 477773